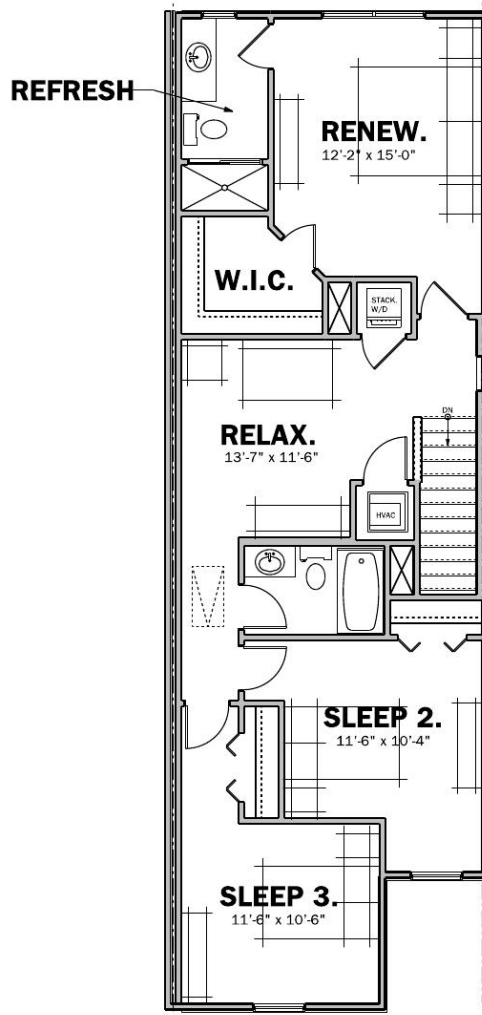
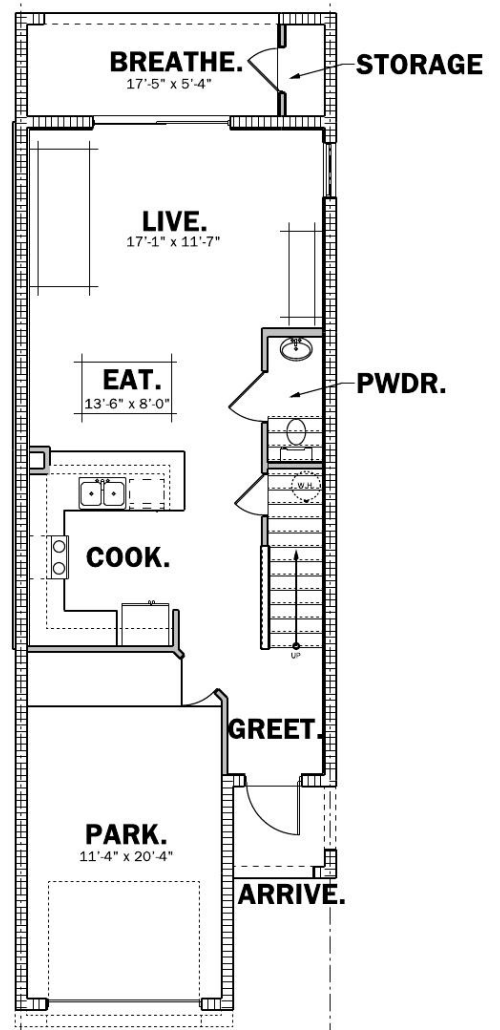


# Ana Maria



**2nd FLOOR PLAN**  
 UNIT "E" EXTERIOR UNIT



**1st FLOOR PLAN**  
 UNIT "E" EXTERIOR UNIT

AREA TABULATION	
1st FLOOR	628 S.F.
2nd FLOOR	972 S.F.
TOTAL LIVING	1600 S.F.
GARAGE	248 S.F.
LANAI	110 S.F.
ENTRY	32 S.F.
TOTAL UNDER ROOF	1990 S.F.

**PRELIMINARY**

Because we continually strive to improve our homes, we reserve the right to modify plans, specifications, materials and prices. Some features listed above may change without notice or prior obligation. Dimensions are approximate and are subject to change. Infiti Housing, LLC License Number #CBC06044.

## Standard Features

### INTERIOR FINISHES

- 8ft Tall 6 Panel Embossed Entry Door
- 12"x12" Ceramic Tile Floor at Foyer
- Double Glazed Tinted Tilt Sash Series Single Hung Windows
- 8ft Tall Sliding Glass Doors to Covered Patio
- Textured Ceilings and Wall Finish
- Interior Paint System
- Contemporary Style Interior Trim
- Data Outlet in Cook Room and in each Sleep Room
- A/V Outlet in Live Room and in each Sleep Room
- Full Security System (excludes monitoring)
- Smoke Detectors & Electronic Door Chime
- Pendant Light Fixtures in Eat & in Live Rooms
- Ceiling Fan Pre-Wire in Sleep Rooms and in Live Room
- Carpet and Upgraded Re-bond Pad Throughout
- Rocker Light Switches Throughout Home
- Washer & Dryer Connections
- Ventilated Vinyl Covered Closet Shelving
- HVAC Ventilated Walk In Master Closet

### COOK CONVENIENCES

- Laminate Countertops
- Stainless Steel Double Bowl Sink
- 30" Flat Panel Wood Upper Cabinets
- 12"x12" Ceramic Tile Floor
- Electric Ceramic Glass Top Cooking Surface
- Over the Range Microwave Oven
- Built In Dishwasher
- Garbage Disposal

### REFRESH ROOMS

- 12"x12" Ceramic Tile
- Flat Panel Wood Cabinets per Plan
- Chrome Faucets
- Elongated Toilets
- Mirror Over all Vanities
- Dual Sinks with Laminate Vanity Tops (per plan)
- Large Walk-In Master Shower with Glass Door
- Tub/Shower Combination in Secondary Refresh Rooms
- By-Pass Glass Shower Doors at Secondary Refresh Rooms

### EXTERIOR

- 30 Year Dimensional Shingle Roof
- 2 Exterior Hose Bibs (per plan)
- Concrete Block, Steel and Wood Construction
- Textured Portland Cement Based Finish Exterior Walls
- Screen Enclosure at Covered Porch
- Maintenance Free Ventilated Aluminum Soffit & Fascia
- Owner's Closet at Covered Patio
- Coach Light at Garage (per plan)
- Structurally Engineered Roof & Floor Truss System
- Underground Utilities
- Landscape Package
- Automatic Irrigation System
- 100% Acrylic Exterior Paint System

### ECO FRIENDLY

- 14 SEER Energy Efficient Electric Heat Pump
- R-30 Ceiling & R-11 Exterior Frame Walls Insulation
- Passive Heat Release Roof Ventilation System
- Water Saver Water Closets

Because we continually strive to improve our homes, we reserve the right to modify plans, specifications, materials and prices. Some features listed above may change without notice or prior obligation. Dimensions are approximate and are subject to change. Infiniti Housing, LLC License Number #CBC06044. Effective Date: 1/30/14